

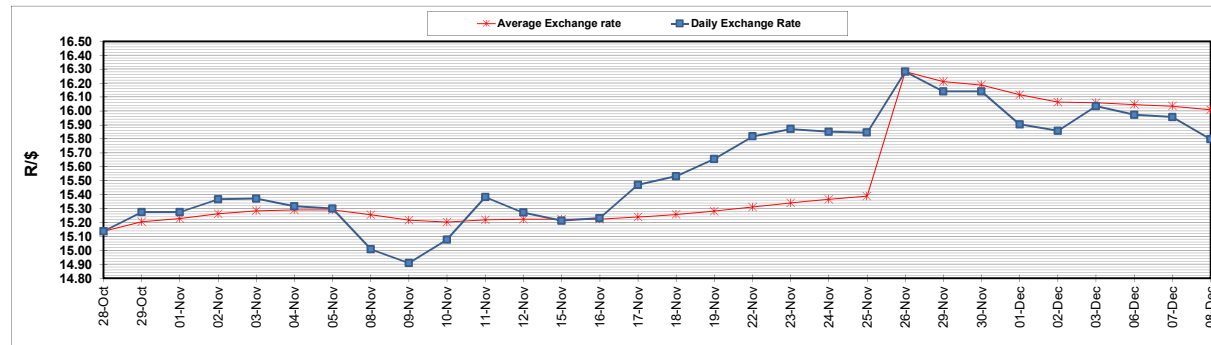
	PETROL 95 ULP	PETROL 93 ULP & LRP	DIESEL 0.05%	DIESEL 0.005%	ILL. PAR.
GAUTENG PUMP PRICE (SA c/l) AS FROM 01/12/2021	2,029.000	2,007.000	-	-	-
WHOLESALE PRICE (SA c/l) AS FROM 01/12/2021	-	-	1,792.480	1,797.880	1,167.688
SINGLE NATIONAL MAXIMUM RETAIL PRICE	-	-	-	-	1,489.000
BASIC FUEL PRICE - 08/12/2021 (SA c/l)	903.561	886.887	885.925	889.605	875.194
PRESS RELEASE CONTRIBUTION TO BFP 01/12/2021 - 08/12/2021 (SA c/l)	973.670	961.670	955.630	961.030	946.128
UNIT OVER/(UNDER) RECOVERY - 08/12/2021 (SA c/l)	70.109	74.783	69.705	71.425	70.934
AVERAGE BASIC FUEL PRICE 26/11/2021 - 08/12/2021	871.238	854.893	860.938	865.861	853.509
AVERAGE UNIT OVER/(UNDER) RECOVERY 26/11/2021 - 08/12/2021	90.245	94.589	82.025	81.836	81.286

ANALYSIS MOVEMENT OF AVERAGE OVER/(UNDER) RECOVERY

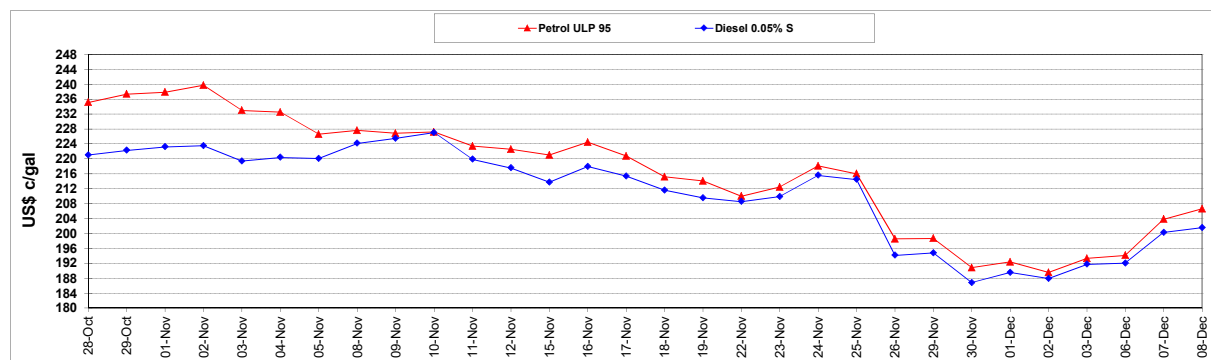
	PETROL 95	PETROL 93	DIESEL 0.05%	DIESEL 0.005%	ILL. PAR.
- MOVEMENT IN INTERNATIONAL PRODUCT PRICES	123.997	127.709	115.378	115.379	114.351
- MOVEMENT IN EXCHANGE RATE	(33.752)	(33.119)	(33.353)	(33.543)	(33.065)
AVERAGE UNIT OVER/(UNDER) RECOVERY 26/11/2021 - 08/12/2021	90.245	94.589	82.025	81.836	81.286

R/\$ EXCHANGE RATE - (R/\$15.7985 - 08/12/2021)

EXCHANGE RATE USED IN BASIC FUEL PRICE



INTERNATIONAL PRODUCT PRICES OF BASKET USED IN BASIC FUEL PRICE



BASIC FUEL PRICE IN SA CENTS PER LITRE

